

S.RB

Multima  
Type Specimen

**MULTI  
MA**

**TYPE  
SPE  
CIMEN**

S.RB

Multima  
Type Specimen

## Content

07	Information
08	Basic Glyphs
10	Characteristics
20	Family Overview
22	Styles
58	Alternates
62	Languages
64	Extended Glyphs
72	OT Features
74	Glyphs Overview
88	Layouts
108	Credits

Multima is a  
trademark of René Bieder.  
Released in 2022.

—  
Buy licenses or download trial  
versions at [www.renebieder.com](http://www.renebieder.com)

Multima is available for  
customizations, modifications  
or languages extensions.  
If you want to learn more send a  
mail to [hi@renebieder.com](mailto:hi@renebieder.com)

In the 1960s, Roger Excoffon's Antique Olive provided the antithesis to the neutral, sans-serif typefaces that were widespread at the time. The Multima family picks up here and carries the idea into the 21st century. It is as powerful as a Formula 1 racing car and as multifunctional as a Swiss army knife.

10	Weights
20	Styles
8	Stylistic Sets
204	Languages
519	Glyphs per font

**A B C D E F G G H I J K L M**  
**N O P Q R S T U V W X Y Z**  
**a b c d e f g g h i j k l m n**  
**o p q r s t t u v w x y y z**  
**0 1 2 3 3 4 5 6 7 8 9**

Ascender

Cap height

x-height

Baseline

Descender





gt35

The image displays the text 'gt35' in a large, bold, white, sans-serif font against a black background. A vertical line is positioned between the '3' and '5'. Horizontal grid lines are present at the top and bottom of the text, and a vertical grid line is positioned between the '3' and '5'. The text is centered horizontally. The 'g' has a thick, rounded stem and a curved bottom. The 't' has a thick stem and a rounded top. The '3' has a thick stem and a rounded top. The '5' has a thick stem and a rounded top.

720

700

500

0

-190

Psychotherapy  
Stigmatisation  
Opportunistic  
Reformations  
Expressionist  
Undercooked  
Mechanically  
Gatekeepers  
Regimented  
Delightfully

*Uncompetitive*  
*Proprietorially*  
*Extrapolating*  
*Maturational*  
**Contraptions**  
**Petrographic**  
**Indisposition**  
**Department**  
**Momentous**  
**Stretchable**

SPECULATION  
XENOPHOBIA  
INTERDICTED  
ADVERSITIES  
COLONISERS  
FEATHERING  
INTERLEAVE  
SUBSIDIARY  
IMPEDANCE  
COMPOSED

ACCOUNTING  
MILLENARIAN  
RECHECKING  
MICROCOSM  
VELVETEENS  
PREDEFINED  
AFTERMATH  
DURABILITY  
REQUESTED  
CONSUMER

Aa

Thin *Italic*  
ExtraLight *Italic*  
Light *Italic*  
Regular *Italic*  
Medium *Italic*  
SemiBold *Italic*  
Bold *Italic*  
ExtraBold *Italic*  
Black *Italic*  
Ultra *Italic*

A B C D E F

G H I J K L M N O

P Q R S T U V

W X Y Z

a b c d e f g

h i j k l m n o p q r

s t u v w x y z

0 1 2 3 3 4 5

6 7 8 9

---

40/40 pt

Earth is the  
third planet  
from the  
Sun.

---

19/22 pt

Earth is the third planet  
from the Sun and the  
only astronomical object  
known to harbor life.

---

11/13 pt

Earth is the third planet from the Sun and the only astronomical object known to harbor life. While large volumes of water can be found throughout the Solar System, only Earth sustains liquid surface water. About 71% of Earth's surface is made up of the ocean, dwarfing Earth's polar ice, lakes, and rivers. The remaining 29% of Earth's surface is land, consisting of continents

A B C D E F

G H I J K L M N O

P Q R S T U V

W X Y Z

a b c d e f g

h i j k l m n o p q r

s t t u v w x y y z

0 1 2 3 3 4 5

6 7 8 9

---

40/40 pt

*Earth is the  
third planet  
from the  
Sun.*

---

19/22 pt

*Earth is the third planet  
from the Sun and the  
only astronomical object  
known to harbor life.*

---

11/13 pt

*Earth is the third planet from the Sun and  
the only astronomical object known to  
harbor life. While large volumes of water  
can be found throughout the Solar System,  
only Earth sustains liquid surface water.  
About 71% of Earth's surface is made up of  
the ocean, dwarfing Earth's polar ice, lakes,  
and rivers. The remaining 29% of Earth's  
surface is land, consisting of continents*

ABCDEF  
 GGHIJKLMNO  
 PQRSTU  
 VWXYZ

abcdefghijklmnop  
 g  
 hijklmnopqr  
 stuvwxyz

0123345  
 6789

40/40 pt

Earth is the  
 third planet  
 from the  
 Sun.

19/22 pt

Earth is the third planet  
 from the Sun and the  
 only astronomical object  
 known to harbor life.

11/13 pt

Earth is the third planet from the Sun and  
 the only astronomical object known to  
 harbor life. While large volumes of water  
 can be found throughout the Solar System,  
 only Earth sustains liquid surface water.  
 About 71% of Earth's surface is made up of  
 the ocean, dwarfing Earth's polar ice, lakes,  
 and rivers. The remaining 29% of Earth's  
 surface is land, consisting of continents

A B C D E F

G H I J K L M N O

P Q R S T U V

W X Y Z

a b c d e f g

h i j k l m n o p q r

s t u v w x y z

0 1 2 3 3 4 5

6 7 8 9

---

40/40 pt

*Earth is the  
third planet  
from the  
Sun.*

---

19/22 pt

*Earth is the third planet  
from the Sun and the  
only astronomical object  
known to harbor life.*

---

11/13 pt

*Earth is the third planet from the Sun and  
the only astronomical object known to  
harbor life. While large volumes of water  
can be found throughout the Solar System,  
only Earth sustains liquid surface water.  
About 71% of Earth's surface is made up of  
the ocean, dwarfing Earth's polar ice, lakes,  
and rivers. The remaining 29% of Earth's  
surface is land, consisting of continents*

ABCDEF  
GGHIJKLMNO  
PQRSTU  
WXYZ

abcdefghijklmnop  
ghijklmnopqr  
stuvwxyz

0123345  
6789

40/40 pt

Earth is the  
third planet  
from the  
Sun.

19/22 pt

Earth is the third planet  
from the Sun and the  
only astronomical object  
known to harbor life.

11/13 pt

Earth is the third planet from the Sun and  
the only astronomical object known to  
harbor life. While large volumes of water  
can be found throughout the Solar System,  
only Earth sustains liquid surface water.  
About 71% of Earth's surface is made up of  
the ocean, dwarfing Earth's polar ice, lakes,  
and rivers. The remaining 29% of Earth's  
surface is land, consisting of continents

ABCDEF  
 GGHIJKLMNO  
 PQRSTUUV  
 WXYZ

abcdefghijklmnop  
 ghijklmnopqr  
 stuvwxyz

0123345  
 6789

40/40 pt

*Earth is the  
 third planet  
 from the  
 Sun.*

19/22 pt

*Earth is the third planet  
 from the Sun and the  
 only astronomical object  
 known to harbor life.*

11/13 pt

*Earth is the third planet from the Sun and  
 the only astronomical object known to  
 harbor life. While large volumes of water  
 can be found throughout the Solar System,  
 only Earth sustains liquid surface water.  
 About 71% of Earth's surface is made up of  
 the ocean, dwarfing Earth's polar ice, lakes,  
 and rivers. The remaining 29% of Earth's  
 surface is land, consisting of continents*

ABCDEF  
 GGHIJKLMNO  
 PQRSTUV  
 WXYZ

abcdefghijklmnop  
 stuvwxyz

0123345

6789

40/40 pt

Earth is the  
 third planet  
 from the  
 Sun.

19/22 pt

Earth is the third planet  
 from the Sun and the  
 only astronomical object  
 known to harbor life.

11/13 pt

Earth is the third planet from the Sun and  
 the only astronomical object known to  
 harbor life. While large volumes of water  
 can be found throughout the Solar System,  
 only Earth sustains liquid surface water.  
 About 71% of Earth's surface is made up of  
 the ocean, dwarfing Earth's polar ice, lakes,  
 and rivers. The remaining 29% of Earth's  
 surface is land, consisting of continents

ABCDEF  
 GGHIJKLMNO  
 PQRSTUV  
 WXYZ

abcdefghijklmnop  
 ghijklmnopqr  
 stuvwxyz

0123345  
 6789

40/40 pt

*Earth is the  
 third planet  
 from the  
 Sun.*

19/22 pt

*Earth is the third planet  
 from the Sun and the  
 only astronomical object  
 known to harbor life.*

11/13 pt

*Earth is the third planet from the Sun and  
 the only astronomical object known to  
 harbor life. While large volumes of water  
 can be found throughout the Solar System,  
 only Earth sustains liquid surface water.  
 About 71% of Earth's surface is made up of  
 the ocean, dwarfing Earth's polar ice, lakes,  
 and rivers. The remaining 29% of Earth's  
 surface is land, consisting of continents*

ABCDEF  
GGHIJKLMNO  
PQRSTUV  
WXYZ

abcdefghijklmnop  
ghijklmnopqr  
stuvwxyz

0123345  
6789

40/40 pt

Earth is the  
third planet  
from the  
Sun.

19/22 pt

Earth is the third planet  
from the Sun and the  
only astronomical object  
known to harbor life.

11/13 pt

Earth is the third planet from the Sun and  
the only astronomical object known to  
harbor life. While large volumes of water  
can be found throughout the Solar System,  
only Earth sustains liquid surface water.  
About 71% of Earth's surface is made up of  
the ocean, dwarfing Earth's polar ice, lakes,  
and rivers. The remaining 29% of Earth's  
surface is land, consisting of continents

**ABCDEF**  
**GGHIJKLMNO**  
**PQRSTUVWXYZ**  
**WXYZ**

**abcdefghijklmnop**  
**ghijklmnopqr**  
**stuvwxyz**  
**0123345**  
**6789**

40/40 pt

***Earth is the  
 third planet  
 from the  
 Sun.***

19/22 pt

***Earth is the third planet  
 from the Sun and the  
 only astronomical object  
 known to harbor life.***

11/13 pt

***Earth is the third planet from the Sun and  
 the only astronomical object known to  
 harbor life. While large volumes of water  
 can be found throughout the Solar System,  
 only Earth sustains liquid surface water.  
 About 71% of Earth's surface is made up of  
 the ocean, dwarfing Earth's polar ice, lakes,  
 and rivers. The remaining 29% of Earth's  
 surface is land, consisting of continents***

**ABCDEF  
GGHIJKLMNO  
PQRSTUV  
WXYZ**

**abcdefghijklmnop  
ghijklmnopqr  
stuvwxyz**

**0123345  
6789**

40/40 pt

**Earth is the  
third planet  
from the  
Sun.**

19/22 pt

**Earth is the third planet  
from the Sun and the  
only astronomical object  
known to harbor life.**

11/13 pt

**Earth is the third planet from the Sun and  
the only astronomical object known to  
harbor life. While large volumes of water  
can be found throughout the Solar System,  
only Earth sustains liquid surface water.  
About 71% of Earth's surface is made up of  
the ocean, dwarfing Earth's polar ice, lakes,  
and rivers. The remaining 29% of Earth's  
surface is land, consisting of continents**

**ABCDEF**  
**GGHIJKLMNO**  
**PQRSTUVWXYZ**  
**WXYZ**

**abcdefghijklmnop**  
**ghijklmnopqr**  
**stuvwxyz**

**0123345**  
**6789**

40/40 pt

***Earth is the  
 third planet  
 from the  
 Sun.***

19/22 pt

***Earth is the third planet  
 from the Sun and the  
 only astronomical object  
 known to harbor life.***

11/13 pt

***Earth is the third planet from the Sun and  
 the only astronomical object known to  
 harbor life. While large volumes of water  
 can be found throughout the Solar System,  
 only Earth sustains liquid surface water.  
 About 71% of Earth's surface is made up of  
 the ocean, dwarfing Earth's polar ice, lakes,  
 and rivers. The remaining 29% of Earth's  
 surface is land, consisting of continents***

**ABCDEF  
GGHIJKLMNO  
PQRSTUV  
WXYZ**

**abcdefghijklmnop  
ghijklmnopqr  
stuvwxyz**

**0123345  
6789**

40/40 pt

**Earth is the  
third planet  
from the  
Sun.**

19/22 pt

**Earth is the third planet  
from the Sun and the  
only astronomical object  
known to harbor life.**

11/13 pt

**Earth is the third planet from the Sun and  
the only astronomical object known to  
harbor life. While large volumes of water  
can be found throughout the Solar System,  
only Earth sustains liquid surface water.  
About 71% of Earth's surface is made up of  
the ocean, dwarfing Earth's polar ice, lakes,  
and rivers. The remaining 29% of Earth's  
surface is land, consisting of continents**

**ABCDEF**  
**GGHIJKLMNO**  
**PQRSTUVWXYZ**  
**WXYZ**

**aabcdefg**  
**ghijklmnopqr**  
**stuvwxyz**

**0123345**  
**6789**

40/40 pt

***Earth is the  
 third planet  
 from the  
 Sun.***

19/22 pt

***Earth is the third planet  
 from the Sun and the  
 only astronomical object  
 known to harbor life.***

11/13 pt

***Earth is the third planet from the Sun and  
 the only astronomical object known to  
 harbor life. While large volumes of water  
 can be found throughout the Solar System,  
 only Earth sustains liquid surface water.  
 About 71% of Earth's surface is made up of  
 the ocean, dwarfing Earth's polar ice, lakes,  
 and rivers. The remaining 29% of Earth's  
 surface is land, consisting of continents***

**ABCDEF  
GGHIJKLMNO  
PQRSTUV  
WXYZ**

**abcdefghijklmnop  
ghijklmnopqr  
stuvwxyz**

**0123345  
6789**

40/40 pt

**Earth is the  
third planet  
from the  
Sun.**

19/22 pt

**Earth is the third planet  
from the Sun and the  
only astronomical object  
known to harbor life.**

11/13 pt

**Earth is the third planet from the Sun and  
the only astronomical object known to  
harbor life. While large volumes of water  
can be found throughout the Solar System,  
only Earth sustains liquid surface water.  
About 71% of Earth's surface is made up of  
the ocean, dwarfing Earth's polar ice, lakes,  
and rivers. The remaining 29% of Earth's  
surface is land, consisting of continents**

**ABCDEF**  
**GGHIJKLMNO**  
**PQRSTUVWXYZ**  
**WXYZ**

**abcdefghijklmnop**  
**ghijklmnopqr**  
**stuvwxyz**

**0123345**  
**6789**

40/40 pt

***Earth is the  
third planet  
from the  
Sun.***

19/22 pt

***Earth is the third planet  
from the Sun and the  
only astronomical object  
known to harbor life.***

11/13 pt

***Earth is the third planet from the Sun and  
the only astronomical object known to  
harbor life. While large volumes of water  
can be found throughout the Solar System,  
only Earth sustains liquid surface water.  
About 71% of Earth's surface is made up of  
the ocean, dwarfing Earth's polar ice, lakes,  
and rivers. The remaining 29% of Earth's  
surface is land, consisting of continents***

**ABCDEF**  
**GGHIJKLMNO**  
**PQRSTUVWXYZ**  
**WXYZ**

**abcdefghijklmnop**  
**ghijklmnopqr**  
**stuvwxyz**

**0123345**  
**6789**

40/40 pt

**Earth is the  
 third planet  
 from the  
 Sun.**

19/22 pt

**Earth is the third planet  
 from the Sun and the  
 only astronomical object  
 known to harbor life.**

11/13 pt

**Earth is the third planet from the Sun and  
 the only astronomical object known to  
 harbor life. While large volumes of water  
 can be found throughout the Solar System,  
 only Earth sustains liquid surface water.  
 About 71% of Earth's surface is made up of  
 the ocean, dwarfing Earth's polar ice, lakes,  
 and rivers. The remaining 29% of Earth's  
 surface is land, consisting of continents**

**ABCDEF**  
**GGHIJKLMNO**  
**PQRSTUVWXYZ**  
**WXYZ**

**aabcdefg**  
**ghijklmnopqr**  
**stuvwxyz**

**0123345**  
**6789**

40/40 pt

***Earth is the  
 third planet  
 from the  
 Sun.***

19/22 pt

***Earth is the third planet  
 from the Sun and the  
 only astronomical object  
 known to harbor life.***

11/13 pt

***Earth is the third planet from the Sun and  
 the only astronomical object known to  
 harbor life. While large volumes of water  
 can be found throughout the Solar System,  
 only Earth sustains liquid surface water.  
 About 71% of Earth's surface is made up of  
 the ocean, dwarfing Earth's polar ice, lakes,  
 and rivers. The remaining 29% of Earth's  
 surface is land, consisting of continents***

**ABCDEF**  
**GGHIJKLMNO**  
**PQRSTUVWXYZ**  
**WXYZ**

**abcdefghijklmnop**  
**ghijklmnopqr**  
**stuvwxyz**  
**0123345**  
**6789**

40/40 pt

**Earth is the  
 third planet  
 from the  
 Sun.**

19/22 pt

**Earth is the third planet  
 from the Sun and the  
 only astronomical object  
 known to harbor life.**

11/13 pt

**Earth is the third planet from the Sun and  
 the only astronomical object known to  
 harbor life. While large volumes of water  
 can be found throughout the Solar System,  
 only Earth sustains liquid surface water.  
 About 71% of Earth's surface is made up of  
 the ocean, dwarfing Earth's polar ice, lakes,  
 and rivers. The remaining 29% of Earth's  
 surface is land, consisting of continents**

**ABCDEF**  
**GGHIJKLMNO**  
**PQRSTUVWXYZ**  
**WXYZ**

**aabcdefg**  
**ghijklmnopqr**  
**stuvwxyz**

**0123345**  
**6789**

40/40 pt

***Earth is the  
 third planet  
 from the  
 Sun.***

19/22 pt

***Earth is the third planet  
 from the Sun and the  
 only astronomical object  
 known to harbor life.***

11/13 pt

***Earth is the third planet from the Sun and  
 the only astronomical object known to  
 harbor life. While large volumes of water  
 can be found throughout the Solar System,  
 only Earth sustains liquid surface water.  
 About 71% of Earth's surface is made up of  
 the ocean, dwarfing Earth's polar ice, lakes,  
 and rivers. The remaining 29% of Earth's  
 surface is land, consisting of continents***

**Gagty3**  
**Gagty3**

Grammatical  
Grammatical

Alternate G, a, t

Adaptability  
Adaptability

Alternate a, t, y

**23 Gadgets**  
**23 Gadgets**

Alternate 3, G, a, g, t

*Maximization*  
*Maximization*

Alternate a, t

*Cartography*  
*Cartography*

Alternate a, t, y

***Maßnahmen***  
***Maßnahmen***

Alternate a, ß

# LANGUAGES

A	Abenaki	Danish
	Afaan Oromo	Dawan
	Afar	Delaware
	Afrikaans	Dholuo
	Albanian	Drehu
	Alsatian	Dutch
	Amis	E English
	Anuta	Estonian
	Aragonese	Faroese
	Aranese	F Fijian
	Aromanian	Filipino
	Arrernte	Finnish
	Arvanitic	Folkspraak
	Asturian	French
	Atayal	Frisian
	Aymara	Friulian
B	Bashkir	G Gagauz
	Basque	Galician
	Bemba	Ganda
	Bikol	Genoese
	Bislama	German
	Bosnian	Gooniyandi
	Breton	Greenlandic
C	Cape Verdean	Guadeloupean
	Catalan	Gwichin
	Cebuano	H Haitian Creole
	Chamorro	Han
	Chavacano	Hawaiian
	Chichewa	Hiligaynon
	Chickasaw	Hopi
	Cimbrian	Hotcak
	Cofan	Hungarian
	Corsican	I Icelandic
	Creek	Ido
	Crimean Tatar	Ilocano
	Croatian	Indonesian
	Czech	Interglossa

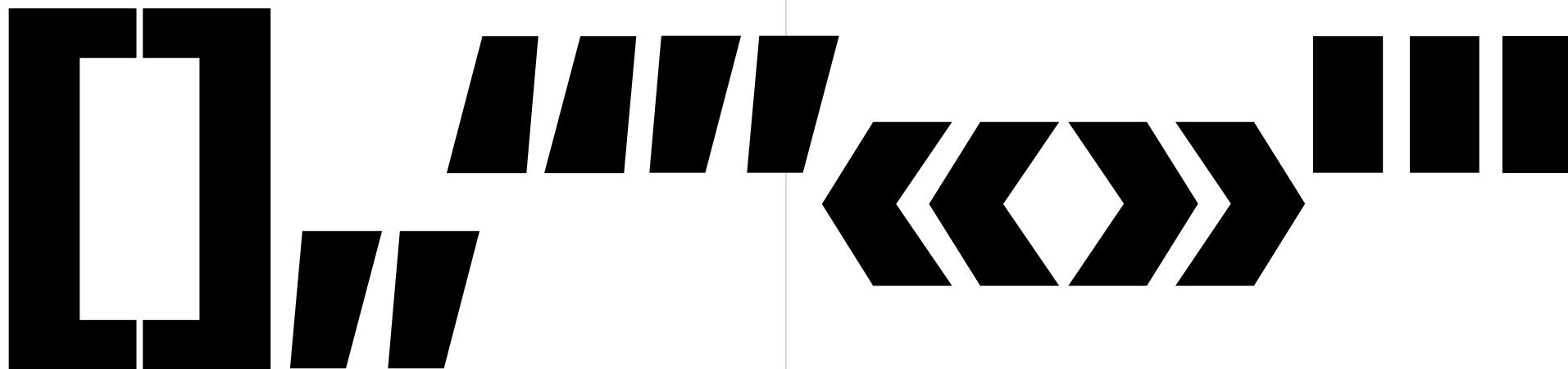
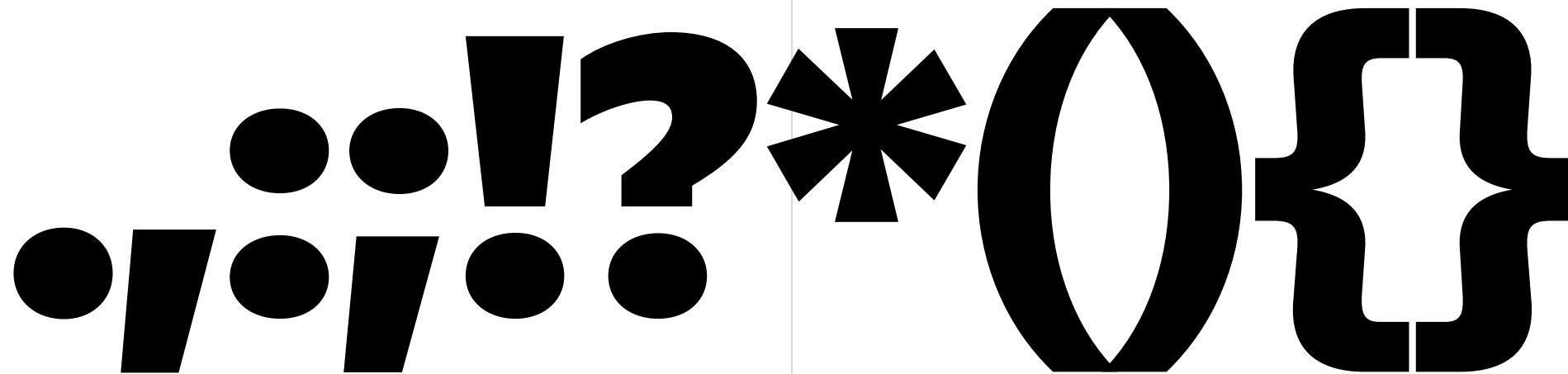
	Interlingua	Mohawk	Sardinian	U Ukrainian
	Irish	Moldovan	Scottish Gaelic	Uzbek
	Istroromanian	Montagnais	Serbian	V Venetian
	Italian	Montenegrin	Seri	Vepsian
	Jamaican	Murrinhpatha	Seychellois	Volapuk
	Javanese	Nagamese	Shawnee	Voro
	Jerriais	Creole	Shona	W Wallisian
K	Kala Lagaw Ya	Ndebele	Sicilian	Walloon
	Kapampangan	Neapolitan	Silesian	Waraywaray
	Kaqchikel	Ngiyambaa	Slovak	Warlpiri
	Karakalpak	Niuean	Slovenian	Wayuu
	Karelian	Noongar	Slovio	Welsh
	Kashubian	Norwegian	Somali	Wikmungkan
	Kikongo	Novial	Sorbian Lower	Wiradjuri
	Kinyarwanda	O Occidental	Sorbian Upper	Wolof
	Kiribati	Occitan	Sotho Northern	X Xhosa
	Kirundi	Oshiwambo	Sotho Southern	Y Yapese
	Klingon	Ossetian	Spanish	Y Yindjibarndi
L	Ladin	P Palauan	Sranan	Zapotec
	Latin	Papiamento	Sundanese	Z Zulu
	Latino Sine	Piedmontese	Swahili	Zuni
	Latvian	Polish	Swazi	
	Lithuanian	Portuguese	Swedish	
	Lojban	Potawatomi	T Tagalog	
	Lombard	Q Qeqchi	Tahitian	
	Low Saxon	Quechua	Tetum	
	Luxembourgish	R Rarotongan	Tok Pisin	
M	Maasai	Romanian	Tokelauan	
	Makhuwa	Romansh	Tongan	
	Malay	Rotokas	Tshiluba	
	Maltese	S Sami Inari	Tsonga	
	Manx	Sami Lule	Tswana	
	Maori	Sami Northern	Tumbuka	
	Marquesan	Sami Southern	Turkish	
	Meglenoromanian	Samoan	Turkmen	
	Meriam Mir	Sango	Tuvaluan	
		Saramaccan	Tzotzil	

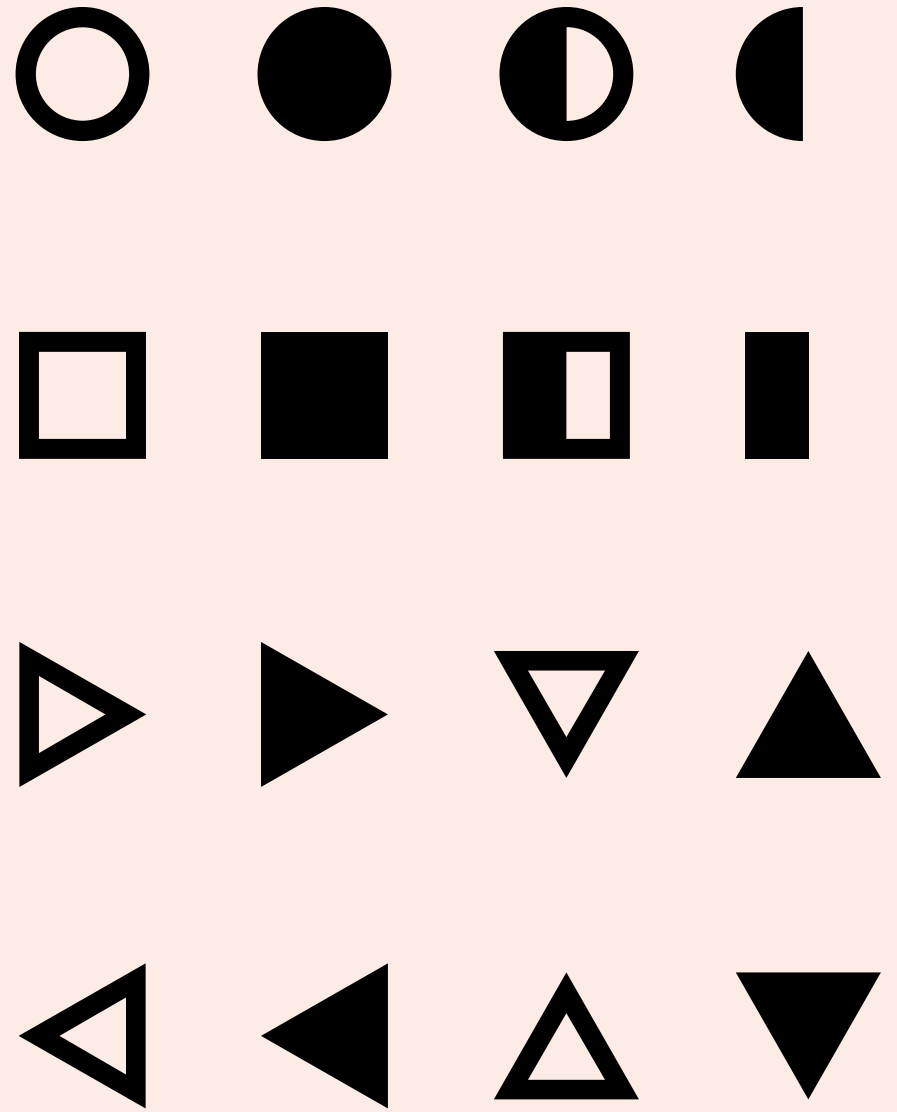
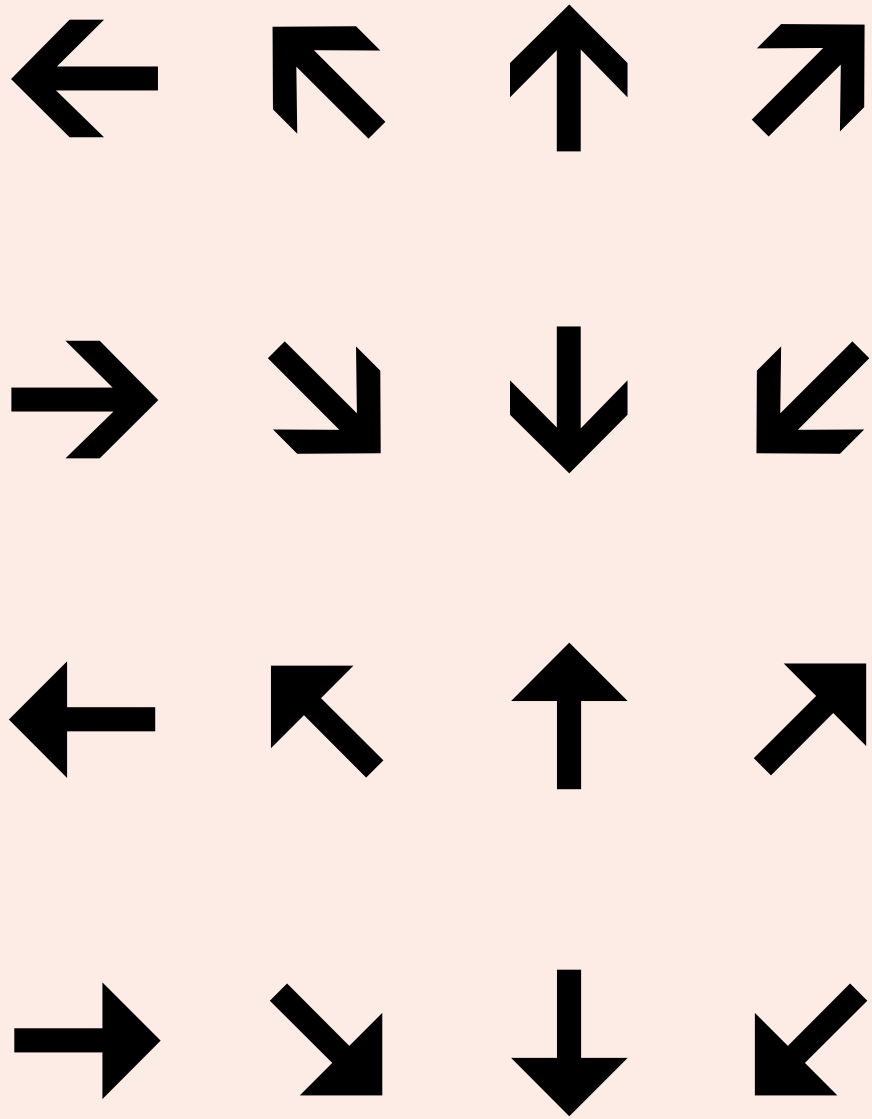
MÜETIL

İŃĞÜÄÄL

\$ ¢ € ₣  
 ₹ ₹ £ ¥  
 & § @  
 © ® #

+ − × ÷  
 = ≠ > <  
 ≫ ≪ ±  
 ≈ ~ ^





Off

On

Case sensitives

¿iHOLA?!  
 {[(CASE)]}

¿iHOLA?!  
 {[(CASE)]}

Contextual alts

MAßE, ->

MAßE, →

Tabular numbers

\$12,949.01

\$12,949.01

Fractions

1/2 kg

½ kg

Superior

Note<sup>1</sup>

Note<sup>1</sup>

Inferior

H<sub>2</sub>O

H<sub>2</sub>O

Ordinals

1<sup>oa</sup> primo

1<sup>oa</sup> primo

Off

On

Alternate a

Availability

Availability

Alternate g

Unplugging

Unplugging

Alternate y

Synonymy

Synonymy

Alternate t

Matterhorn

Matterhorn

Alternate ß

Maßnahme

Maßnahme

Alternate G

Generator

Generator

Alternate 3

36 Hill Plaza

36 Hill Plaza

Alternate Arrows

→ Here ←

→ Here ←

## Uppercase

A	Á	Ă	Ǻ	Â	Ä	À	Ā
Ą	Å	Ǻ	Æ	B	C	Ć	Č
Ç	Ĉ	D	Đ	Ď	Ð	E	É
Ě	Ê	Ë	È	È	Ě	Ę	F
G	Ğ	Ĝ	Ġ	H	Ĥ	I	Í
Î	Ï	İ	Ì	Ī	Ĵ	J	K
Ķ	L	Ł	Ľ	Ļ	Ł	M	N
Ń	Ñ	Ŋ	Ņ	Ñ	O	Ó	Ô
Ö	Ò	Õ	Õ	Ø	Õ	Œ	P
Ɔ	Q	R	Ŕ	Ř	Ŗ	S	Ś
Š	Ş	Ş	Ɔ	T	Ʀ	Ť	Ț
Ț	U	Ú	Û	Ü	Ù	Ŭ	Ū
Ů	Ů	V	W	Ŵ	Ŷ	Ÿ	Ẁ
X	Y	Ý	ÿ	ÿ	ÿ	Z	Ž
Ž	Ž						

## Uppercase Alternates

G	Ğ	Ĝ	Ġ
---	---	---	---

## Lowercase

a	á	ă	â	ä	à	ā	ą
å	ã	æ	b	c	ć	č	ç
ć	d	ď	d'	đ	e	é	ě
ê	ë	è	è	ē	ę	f	g
ğ	g	ġ	h	ħ	i	ı	í
î	ï	ì	ī	ĵ	j	ĵ	k
ķ	l	l̇	l'	ł	ł	m	n
ń	ň	ŋ	ŋ	ñ	o	ó	ô
ö	ò	ó	ō	ø	õ	œ	p
þ	q	r	ṙ	ř	ŗ	s	ś
š	ș	ș	ß	t	ţ	ţ	ţ
ț	u	ú	û	ü	ù	ú	ū
ų	ů	v	w	ẇ	ŵ	w̃	ẁ
x	y	ý	ÿ	ÿ	ÿ	z	ż
ž	ž						

## Lowercase Alternates

a	á	ă	â	ä	à	ā	ą
å	ã	g	ğ	ġ	ĝ	†	‡
†	‡	‡	y	ý	ÿ	ÿ	ÿ
ƒ							

## Ligatures

fi	fl
----	----

## Ordinals

a	o	α
---	---	---

## Numbers

0	1	2	3	4	5	6	7
8	9	0	1	2	3	4	5
6	7	8	9	0	1	2	3
4	5	6	7	8	9	0	1
2	3	4	5	6	7	8	9
0	1	2	3	4	5	6	7
8	9	0	1	2	3	4	5
6	7	8	9	/	1/3	2/3	1/5
2/5	3/5	4/5	1/6	5/6	1/8	3/8	5/8
7/8							

## Alternate Numbers

3	3	3	₃	₃	₃	₃	1/3
2/3	3/5	3/8					

## Punctuations

.	,	:	;	...	!	i	?
¿	·	•	*	#	/	\	¡
¿	·	•	/	\	(	)	{
}	[	]	(	)	{	}	[
]	-	-	—	-	-	-	—
,	"	"	"	'	'	«	»
<	>	"	'	«	»	<	>

## Symbols

¢	¤	\$	€	ƒ	₣	₹	£
¥	¢	¤	\$	€	ƒ	₣	₹
£	¥	+	-	×	÷	=	≠
>	<	≥	≤	±	≈	~	^
%	‰	+	-	×	÷	=	≠
>	<	≥	≤	±	≈	~	^
↑	↗	→	↘	↓	↙	←	↖
↔	↑	↗	→	↘	↓	↙	←
↖	↔	●	○	◐	◑	◆	◇
◇	■	■	□	◻	▲	▶	▼
◀	△	▷	▽	◁	▲	▶	▼
◀	★	♥	✓	✗	@	©	¶
§	©	®	®	™	°		!
†	‡	No	e	@		!	

S.RB

7, 343

255, 340

403, 340

649, 343

329, 264

178, 174

379, 160

361, 131

13, -39

419, -39

656, -23

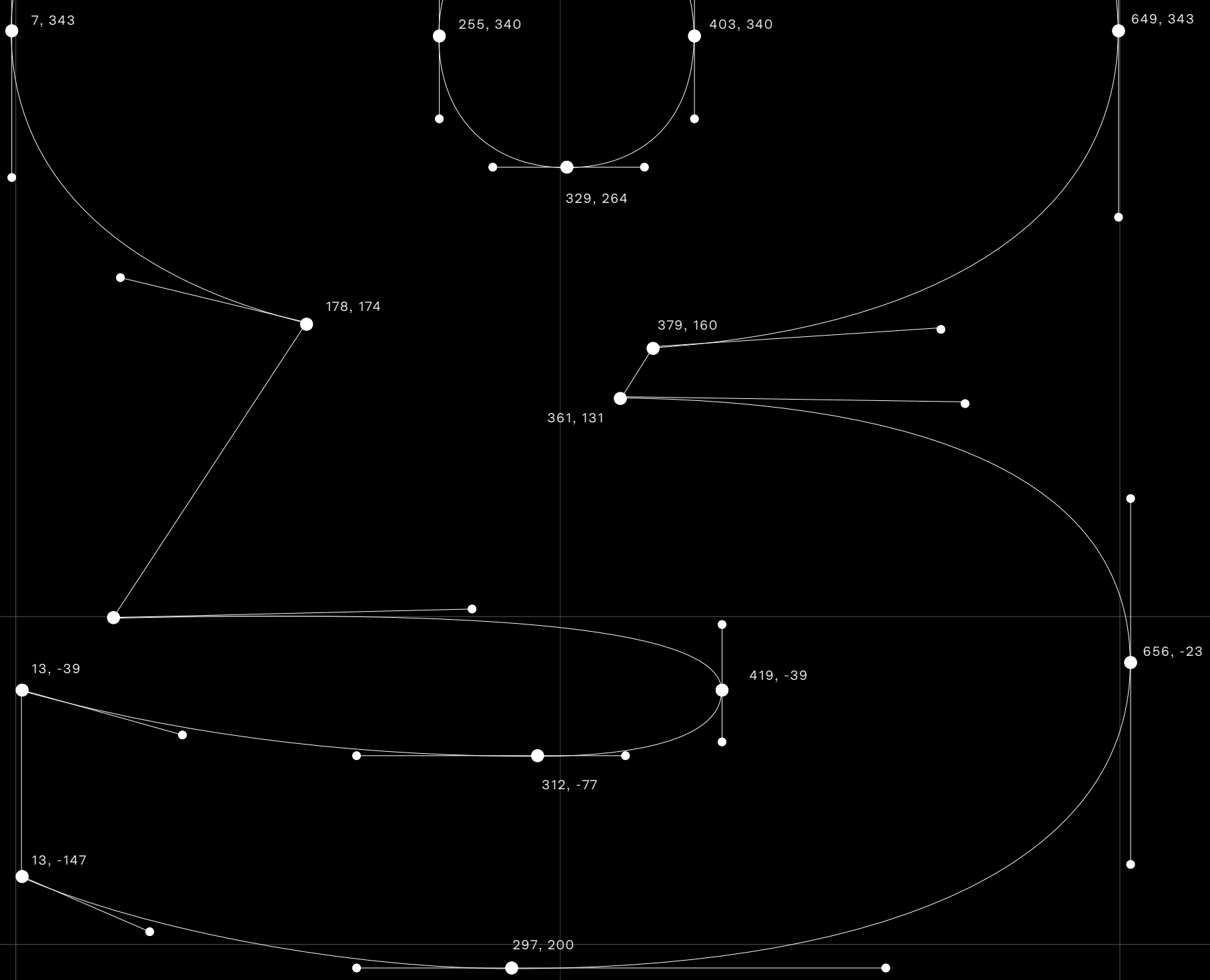
312, -77

13, -147

297, 200

86

87



**ABCDEF  
GHIJKLM  
NOPQRS  
TUVWX  
YZ0123  
456789  
(&\$€£#)**



**Ain't  
nothing  
but a g  
thang**

**Ain't**

**nothing**

**but a g**

**thang**

07	Information
09	Fleet Overview
12	G800
16	G700
20	G650/G650ER
24	G600
28	G500
32	Special Missions
44	Careers
52	Sustainability
60	Contact Us

39.806978 N  
3.118960 E



**P****911  
CS**

# TECHNICAL SPECS

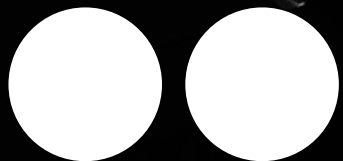
DESCRIPTION	VALUE
CYLINDERS	<b>6</b>
FUEL GRADE	<b>98</b>
BORE	<b>91.0 mm</b>
STROKE	<b>76.4 mm</b>
DISPLACEMENT	<b>2,981 cm<sup>3</sup></b>
POWER (KW)	<b>331 kW</b>
▶ POWER (PS)	<b>450 PS</b>
RPM POINT MAXIMUM POWER	<b>6,500 1/min</b>
MAXIMUM ENGINE SPEED	<b>7,500 1/min</b>
MAX. TORQUE	<b>530 Nm</b>
RPM RANGE MAXIMUM TORQUE	<b>2,300 - 5,000</b>
MAX. OUTPUT PER LITER (KW/L)	<b>111.00 kw/l</b>

**CIRCLES**

**BENJAMIN  
WALDMANN**

**23 OCTOBER  
2020**

2 MINUTES  
45 SECONDS



KIELER  
 WOCHEN  
 AMERICA'S  
 CUP

VOLVO  
 OCEAN RACE  
 BARCO  
 LANA

COWES  
 WEEK

1775  
 1777  
 1792  
 1822  
 1832  
 1826

CUMBERLAND CUP  
 LOUGH REE  
 WHITSTABLE  
 PORT OF DARTMOUTH  
 PORT OF PLYMOUTH  
 COWES WEEK

0 1 2  
 3 4 5  
 6 7 8  
 9

**S**

**G**

# THE CREATIVE AFTERNOON

ISSUE #22  
BERLIN, 18 SEP



**Emirates / Cathay**  
**Pacific / Singapore**  
**Air New Zealand**  
**Virgin Atlantic / All**  
**Nippon / Qantas**

Multima  
Designed by René Bieder  
Berlin, 2022

Buy licenses or download trial  
versions at [www.renebieder.com](http://www.renebieder.com)

Multima is available  
for modifications or languages  
extensions. If you want to  
learn more send a mail to  
[hi@renebieder.com](mailto:hi@renebieder.com)

Spacing and Kerning by  
Igino Marini  
[www.ikern.space](http://www.ikern.space)

Font Engineering by  
Christoph Koeberlin  
[www.christoph.koe.berlin](http://www.christoph.koe.berlin)

## About

Studio Rene Bieder is the type design practice of Berlin based type designer Rene Bieder. I create retail and custom typefaces that combine functionality with a timeless aesthetic.

## Services

Retail fonts  
Custom fonts  
Font modifications  
Language extensions  
Logo refinements

Studio René Bieder  
Eisenacher Str. 30  
10781 Berlin, Germany

---

[hi@renebieder.com](mailto:hi@renebieder.com)  
[www.renebieder.com](http://www.renebieder.com)